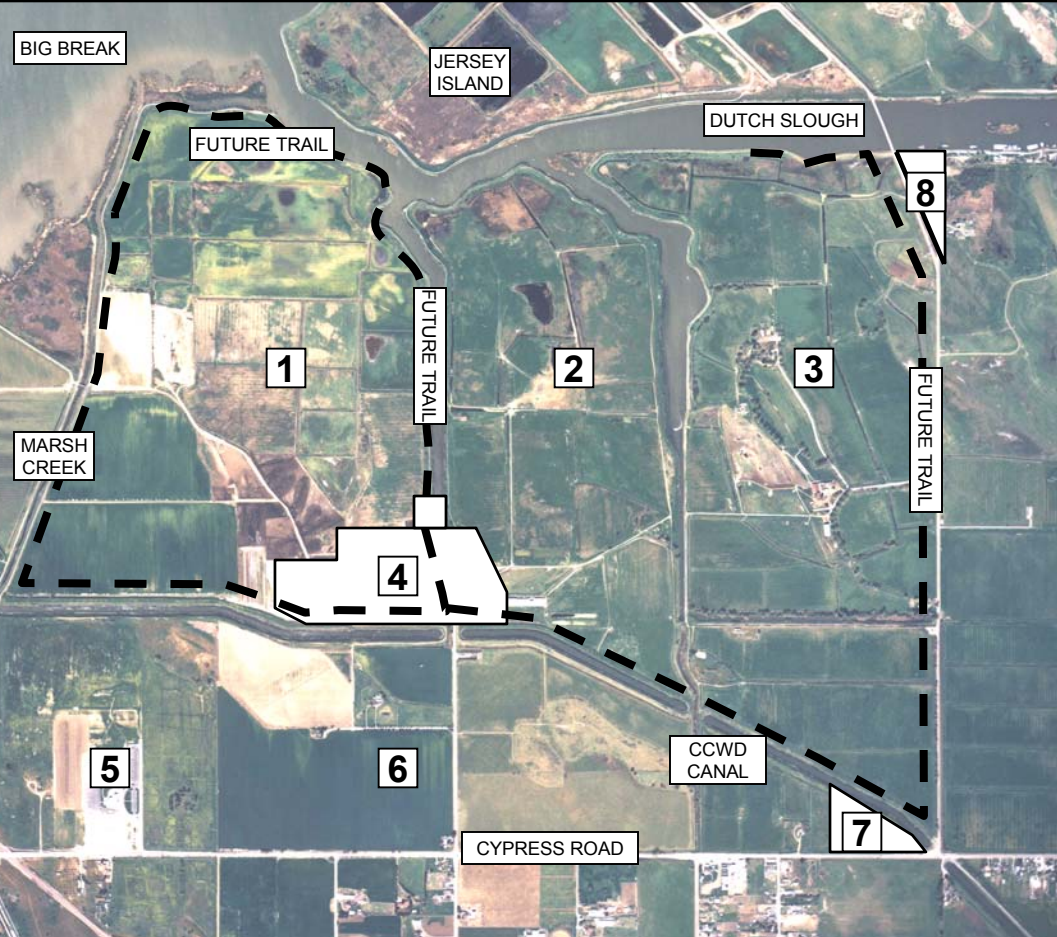


1 EMERSON
PARCEL
(438 acres)

2 GILBERT
PARCEL
(292 acres)

3 BURROUGHS
PARCEL
(436 acres)

4 COMMUNITY PARK AND
SWIM LAGOON SITE
(55 acres)



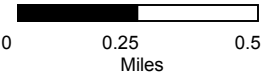
The Dutch Slough properties consist of 1,229 acres on the historical delta of Marsh Creek north of the Contra Costa Water District (CCWD) Canal. The parcels were historically owned by the Emerson, Gilbert, and Burroughs families who sold their land to the California Department of Water Resources (DWR) in October 2003. DWR will restore these lands to natural habitat with the financial support of the Coastal Conservancy and the California Bay-Delta Authority (CBDA). Under the proposal to the CBDA, the project will restore 1,166 acres of wetland and upland habitats. The landowners deeded fee title to the remaining 63 acres of land to the City of Oakley for recreational purposes consistent with the restoration goals of the project. The City of Oakley plans to develop a 50 acre community park, a 5 acre a swim lagoon, and an 8 acre waterfront access area at the end of Jersey Road. The landowners also deeded 10 acres of public access easements on approximately 4.5 miles of trail around the edges of the Emerson parcel and on portions of the Gilbert and Burroughs properties.

5 DELTA VISTA
MIDDLE SCHOOL

6 FUTURE
HOMES
(300 acres)

7 LAND TO BE CEEDED
TO CITY OF OAKLEY
(27 acres)

8 FUTURE CITY OF OAKLEY
WATERFRONT ACCESS
(8 acres)



Parcel boundaries are approximate



DUTCH SLOUGH TIDAL MARSH AND FLOODPLAIN RESTORATION PROJECT